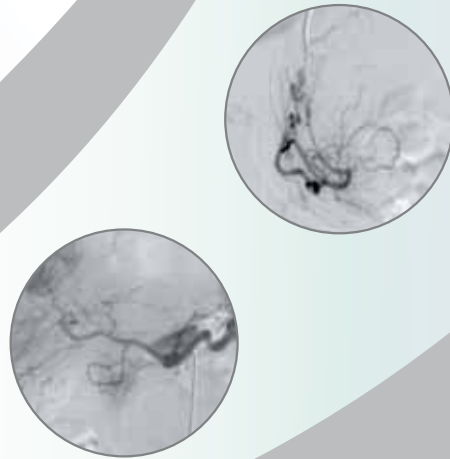


 **EmboCath[®] Plus**
INFUSION MICROCATHETER

 **Sequitor[®]**
STEERABLE GUIDEWIRE



It's All in the Delivery

 **BioSphere[®]**
Medical

Launching Higher Performance

Embosphere[®], EmboGold[®], and HepaSphere[™] microspheres are based on advanced, industry-leading BioSphere Medical technology. This technology, combined with the EmboCath[®] Plus Infusion Microcatheter and Sequitor[®] Steerable Guidewire, provides a fully integrated system for optimal embolic performance.

EmboCath[®] Plus INFUSION MICROCATHETER

- **Controlled delivery**
 - Largest internal lumen diameter in its class—0.028"
 - 10% greater flow rate
- **Flexible, kink resistant and durable**
PINSTRIPE[®] braid design provides optimal balance for agile tracking

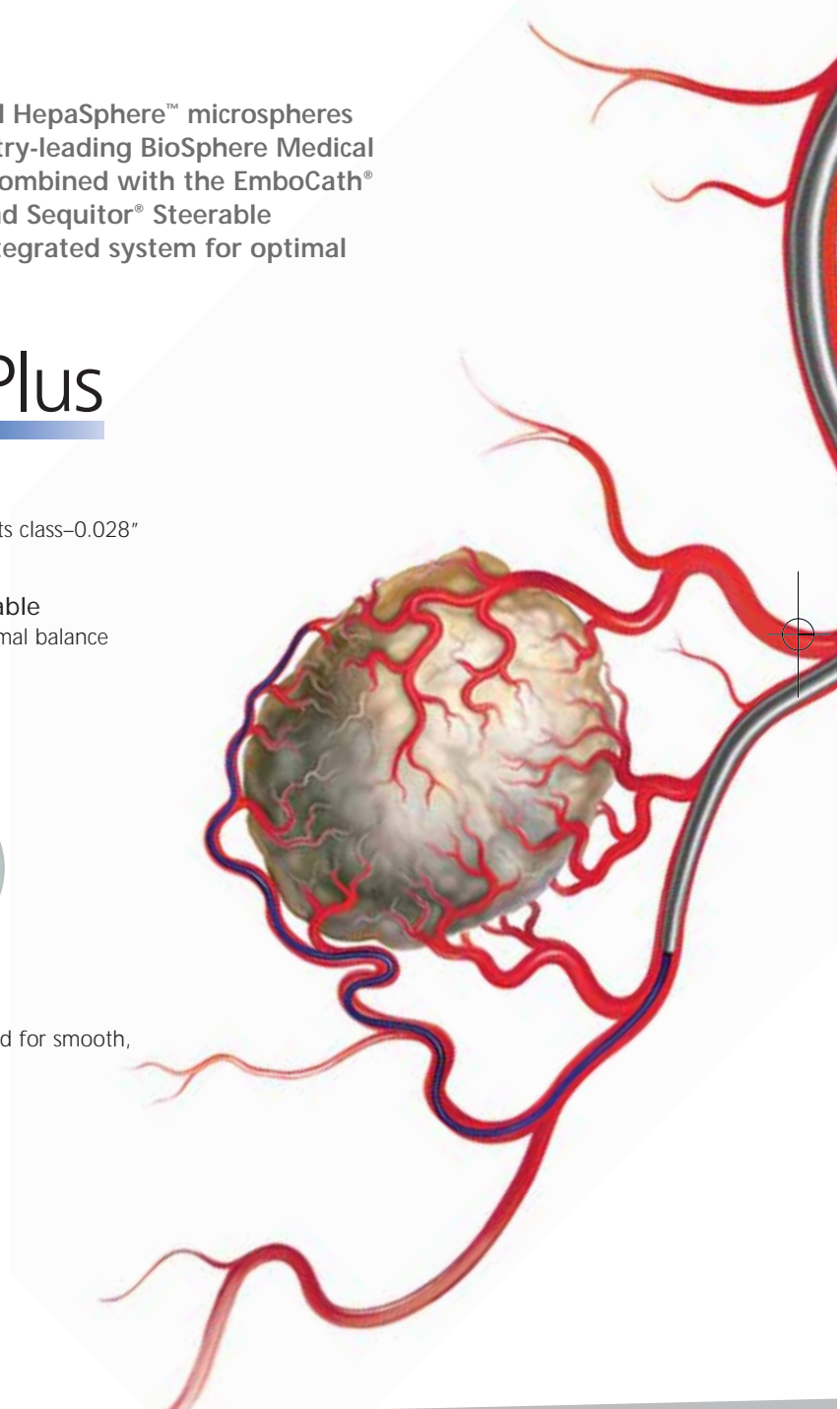
EmboCath[®] Plus
Catheter



Competitive
Catheter



- **Smooth injection**
Clear, chemo-compatible hub designed for smooth, fluent injection of microspheres
- **Extra bright tip**
Enhanced fluoroscopic visibility
- **Embosphere-friendly hub**
Facilitates embolic passage



ance in Embolic Delivery



Navigation is the key to accurate embolic delivery

Sequitor® STEERABLE GUIDEWIRE

- **Longer distal tip**
Designed to access pelvic and visceral anatomy and enable better navigation through tortuous vessels or vasculature
- **Predictable and selective placement**
Provides excellent torque response and flexibility
- **Durable atraumatic polymer tip**
Retains shape for selective vessel access without promoting spasm
- **Highly visible distal segment**
Platinum coil combined with radiopaque loaded polymer provides vivid fluoroscopic visibility
- **Smooth navigation through tortuous anatomy**
PASSTHRU® hydrophilic coating provides ultra slippery surface

Advanced Guidewire Construction



Ordering Information

Sequitor® Steerable Guidewire

Reference Code	Diameter (Inches)	Tip Stiffness	Tip Configuration	Length
SQR 1411	.014	LT	Angled	165 cm
SQR 1412	.014	LT	Straight	165 cm
SQR 1811	.018	LT	Angled	165 cm
SQR 1812	.018	LT	Straight	165 cm

EmboCath® Plus Infusion Microcatheter

Product Code	Diameter French	Length (cm)	I.D. (Inches)	Tip Shape
ECP100	3.0-2.8	100	0.028	Straight
ECP135	3.0-2.8	135	0.028	Straight

BioSphere Medical S.A.
 Parc des Nations
 Paris Nord 2
 383, rue de la Belle Etoile
 95700 ROISSY en FRANCE
 France

Tel: +33 (0)1 48 17 25 25
 Fax: +33 (0)1 49 38 02 68



www.biospheremed.com
www.ask4ufe.com
info@biospheremed.fr

MS 08-07 Rev A GB 03/08