



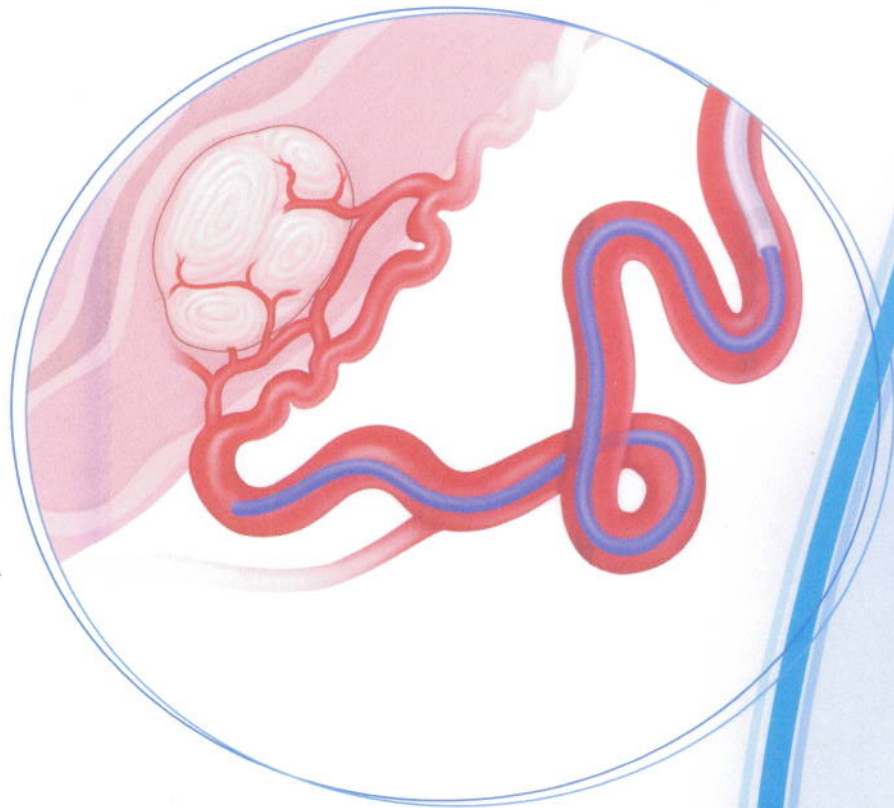
# Tenor™

STEERABLE GUIDEWIRE



# EmboCath® Plus

INFUSION MICROCATETER



## It's All in the Delivery



BioSphere®  
Medical

# Setting the Stage for



- Exceptional Pushability and Torqueability to facilitate precise navigation
- Highly Shapeable tip to suit challenging anatomy
- Radiopaque Visibility provides for accurate placement
- Smooth Tracking for superb handling
- Environmentally friendly - PFOA Free

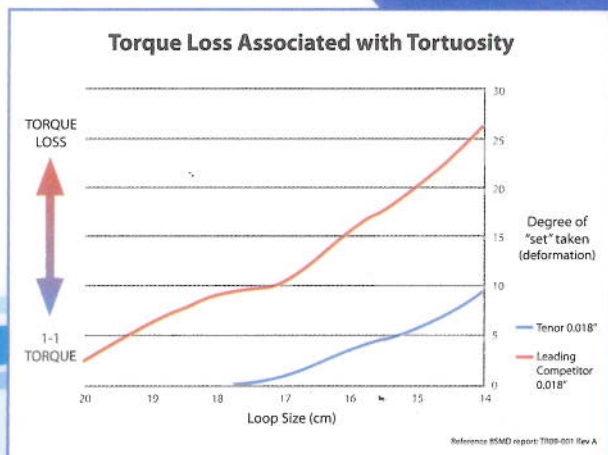
- PFOA free PTFE on proximal segment

- Ultra slick hydrophilic coating on distal segment

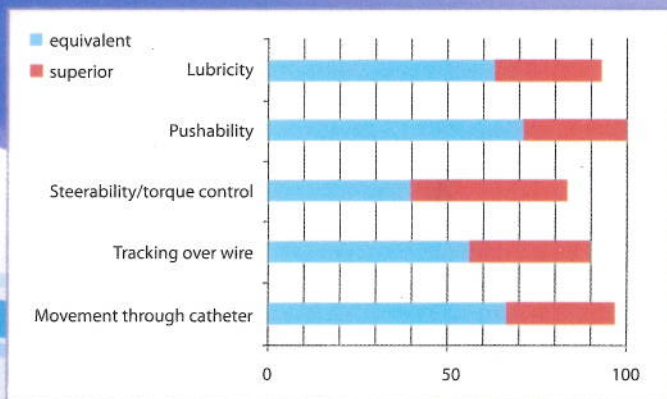
- Innovative stainless steel core wire technology

- Specially designed distal core

- Platinum coil supported by radiopaque polymer jacket



Tenor deforms less and therefore retains torque better when manipulated into a tight loop as compared to competitors in a market evaluation.\*



During a market evaluation more than 80% of users rated the Tenor 0.018" guidewire as superior or equivalent to their current wire of choice across all key product attributes.\*

\*Data on file at BioSphere Medical, Inc.

# Embolotherapy

## EmboCath® Plus INFUSION MICROCATHETER

### Designed Specifically for Embolization Procedures

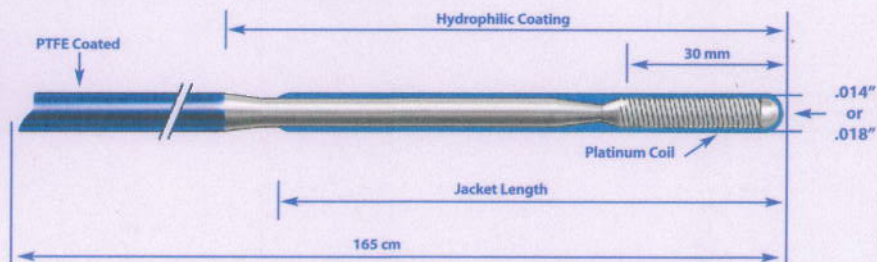
- **Ease of injection**
  - Largest inner lumen in its class
  - Unique smoothly tapered hub
- **Flexible, kink resistant with excellent pushability**
  - Robust yet soft integrated strain relief
  - Pinstripe braiding for superior catheter lumen geometry
- **Excellent fluoroscopic visibility**
- **Fully chemo-compatible material construction**



- **Large 0.028" Inner Diameter**
- 3.0F Proximal outer diameter tapers to 2.8F
- Radiopaque marker band

- Pinstripe® stainless steel braid technology
- Compatible with up to 700-900 µm EmboSphere® microspheres
- Hydrophilic coating
- 800psi dynamic burst pressure rating

### Tenor Advanced Guidewire Construction



Available OD .014" and .018"  
PFOA free, PTFE on the proximal segment

## ORDERING INFORMATION

### Tenor™ Steerable Guidewire

Product Code	Diameter (inches)	Tip stiffness	Tip configuration	Length
TNR2411	.014"	Long taper	Angled	165 cm
TNR2412	.014"	Long taper	Straight	165 cm
TNR2811	.018"	Long taper	Angled	165 cm
TNR2812	.018"	Long taper	Straight	165 cm

### EmboCath® Plus Infusion Microcatheter

Product Code	Diameter French	Length (cm)	I.D. (inches)	Tip Shape
ECP100	3.0-2.8	100	0.028	Straight
ECP135	3.0-2.8	135	0.028	Straight

#### United States

BioSphere Medical, Inc.  
1050 Hingham Street  
Rockland, MA 02370  
USA

Tel: 781.681.7900  
Fax: 781.792.2745  
Customer Service  
800.394.0295



EmboSphere®, EmboCath® Plus, Tenor™ and PinStripe® are trademarks of BioSphere Medical, Inc.

©2009 BioSphere Medical, Inc. All rights reserved. MR09-089 Rev. A