

DIAMONDBACK 360

CORONARY ORBITAL ATHERECTOMY SYSTEM

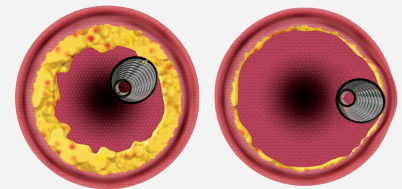
ORBITAL ATHERECTOMY SYSTEM COMPONENTS

ViperWire Advance with Flex Tip Coronary Guide Wire



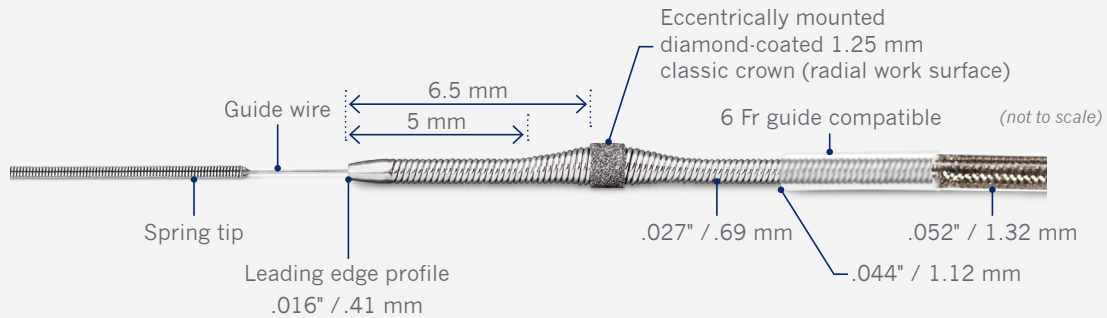
DUAL ACTION

A dual mechanism of action combines differential sanding and pulsatile forces to safely, effectively and efficiently treat severely calcified lesions.¹⁻³



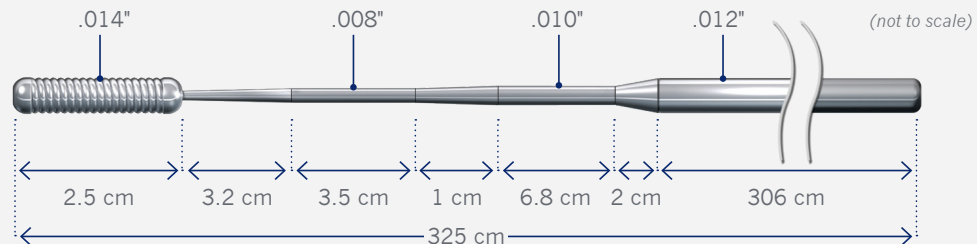
Healthy tissue flexes away from the crown

CROWN SIZING



SPECIFICATIONS

VIPERWIRE ADVANCE WITH FLEX TIP



Tip: Platinum/Tungsten Core: Nitinol with Stainless Steel Support Coil Tip Load at 10 mm: 1.0 g

ORDERING INFORMATION

DIAMONDBACK 360 ORBITAL ATHERECTOMY DEVICE

MODEL NUMBER	CROWN SIZE	LENGTH	QTY
C-2DB-CL125-135	1.25 mm Classic	135 cm	1

VIPERWIRE ADVANCE CORONARY GUIDE WIRE

MODEL NUMBER	DESCRIPTION	LENGTH	QTY
GWC-12325LG-FT	0.012"/0.014" Flex Tip	325 cm	5

VIPERSLIDE LUBRICANT

MODEL NUMBER	DESCRIPTION	QTY
VPR-SLD2	100 mL Bag	10

OAS PUMP

MODEL NUMBER	DESCRIPTION	QTY
SIP-3000	OAS Pump	1

1. Chambers J, et al. JACC Cardiovasc Interv. 2014;7(5):510-518.
2. Shlofmitz E, et al. Expert Rev Med Devices. 2017;14(11):867-879.
3. CSI data on file.

MANUFACTURED BY:

